

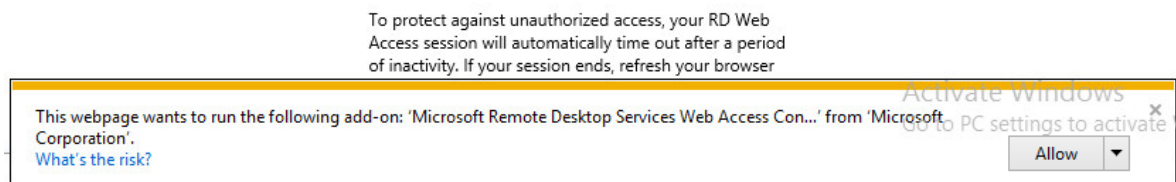
Remote Access Instructions

Use the links above to access the student or staff remote server

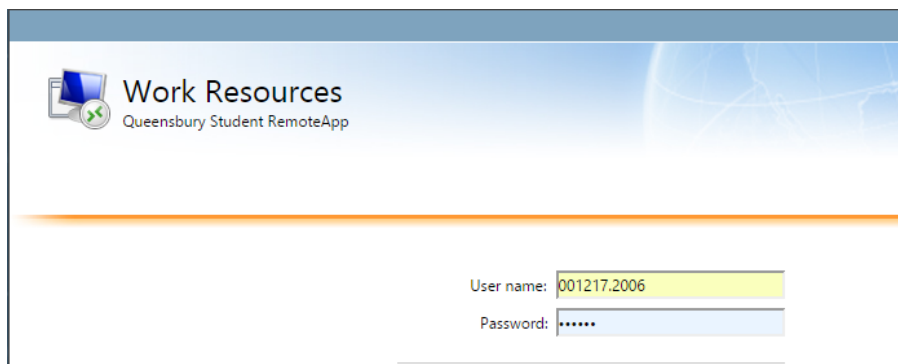
Please note – YOU MUST USE Internet Explorer.

(If you are running Windows 10 you cannot use Microsoft edge. However Internet explorer is available if you search in the start menu for it.)

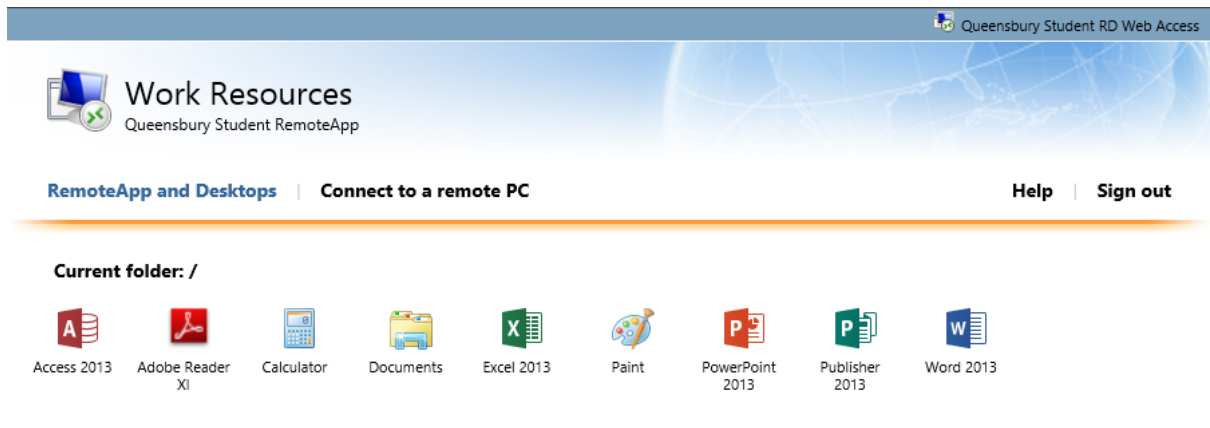
If you are accessing the website for the first you will see the following box pop-up at the bottom of Internet Explorer, click on “Allow” to continue accessing the website.



You login as you would login when you are at school as shown below;



Now you will see the following apps available to use (overtime we will add more software).



In some cases you will encounter this box as shown below fill in the box like below starting with "queensbury\" then your login details:




When click on one of the available software you will get a pop-up box as shown below, click connect and you will see Microsoft Word open up as it would when you are in school.


ider


- Calculator
- Documents
- Excel 2013
- Paint
- PowerPoint 2013
- Publisher 2013
- Word 2013

RemoteApp

 A website is trying to run a RemoteApp program. Make sure that you trust the publisher before you connect to run the program.

This RemoteApp program could harm your local or remote computer. Make sure that you trust the publisher before you connect to run this program.

 Publisher: *.qbury.com
Type: RemoteApp program
Path: WINWORD
Name: Word 2013
Remote computer: sturemote.qbury.com
Gateway server: sturemote.qbury.com

 Show Details